



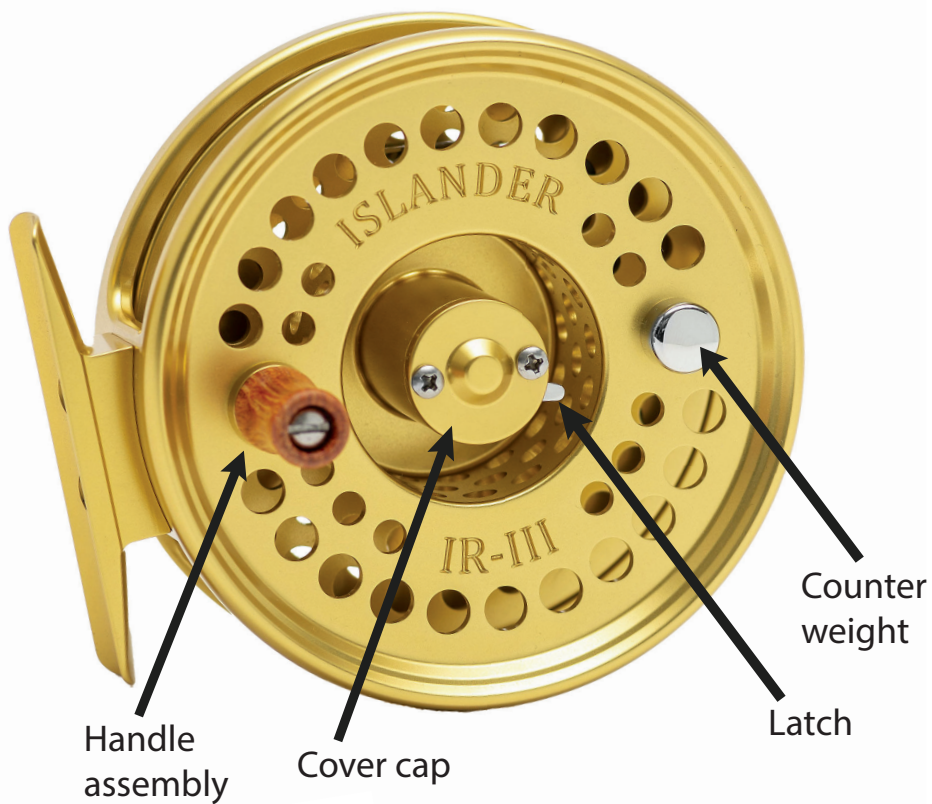
# Maintenance Manual

*IR-III*



# Major Components

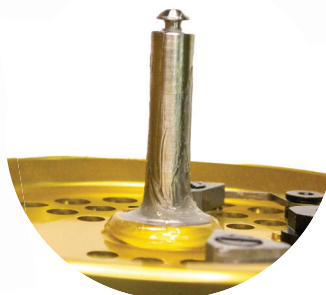
## Spool



## Frame



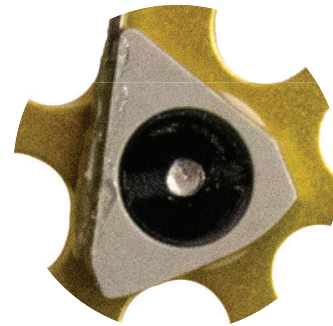
Latch & Latch Spring



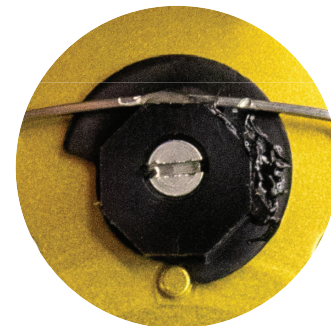
Spindle



Gear



Clicker



Cam

# General Information

**Thank you for purchasing an Islander IR series click-pawl fly reel**

In this manual you will find information on how to take care of your new reel and troubleshoot any problems you are having with the reel.

By following these instructions you will get a lifetime of enjoyment out of this product.

## **Features of the IR:**

- Simple click-pawl system
- Easily converts from right to left hand retrieve without tools
- Adjustable Click-Pawl Tension – Three different tension settings allow you to vary pressure and prevent line overrun which is controlled by an adjustment knob on the frame
- Rapid Release Spool – A simple latch mechanism disengages the spool so that you can rapidly switch lines
- Rotation – 2 Oilite® Bushings
- Machined Out of Aerospace Grade Aluminum – Every Islander reel starts as a solid puck of aluminum before CNC machines turn it into a finished product
- Lifetime Limited Warranty\* – The IR series is built to withstand the test of time so we stand behind it for its lifetime
- Made in Canada – Proudly designed, machined, built, and tested on Vancouver Island

## **Technical Support**

Telephone - 1(250)-544-4856

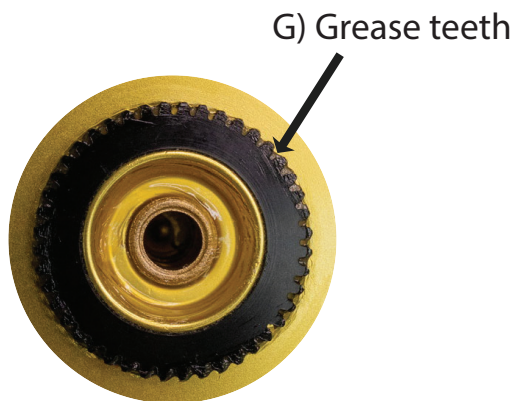
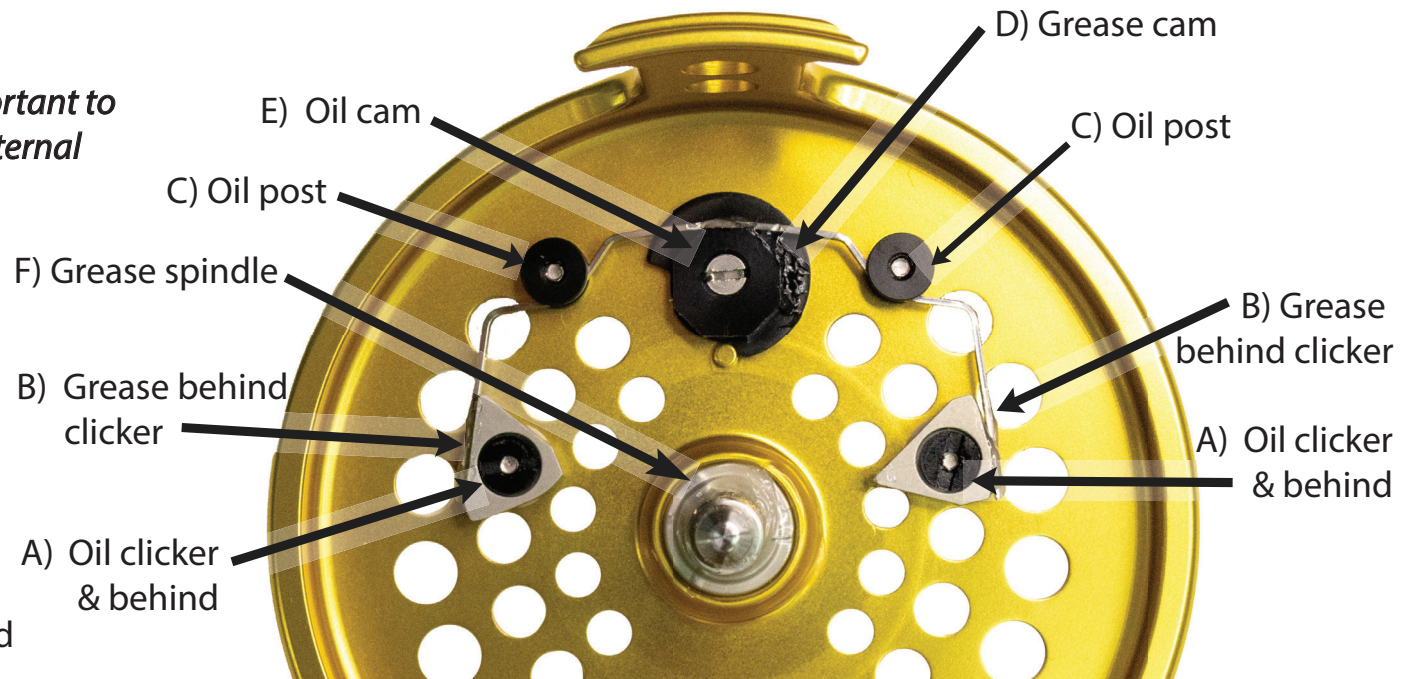
Email - [repairs@islander.com](mailto:repairs@islander.com)

# Lubricating Your Reel

Your reel comes from the factory lubricated. Periodic lubrication is required to maintain optimum performance.

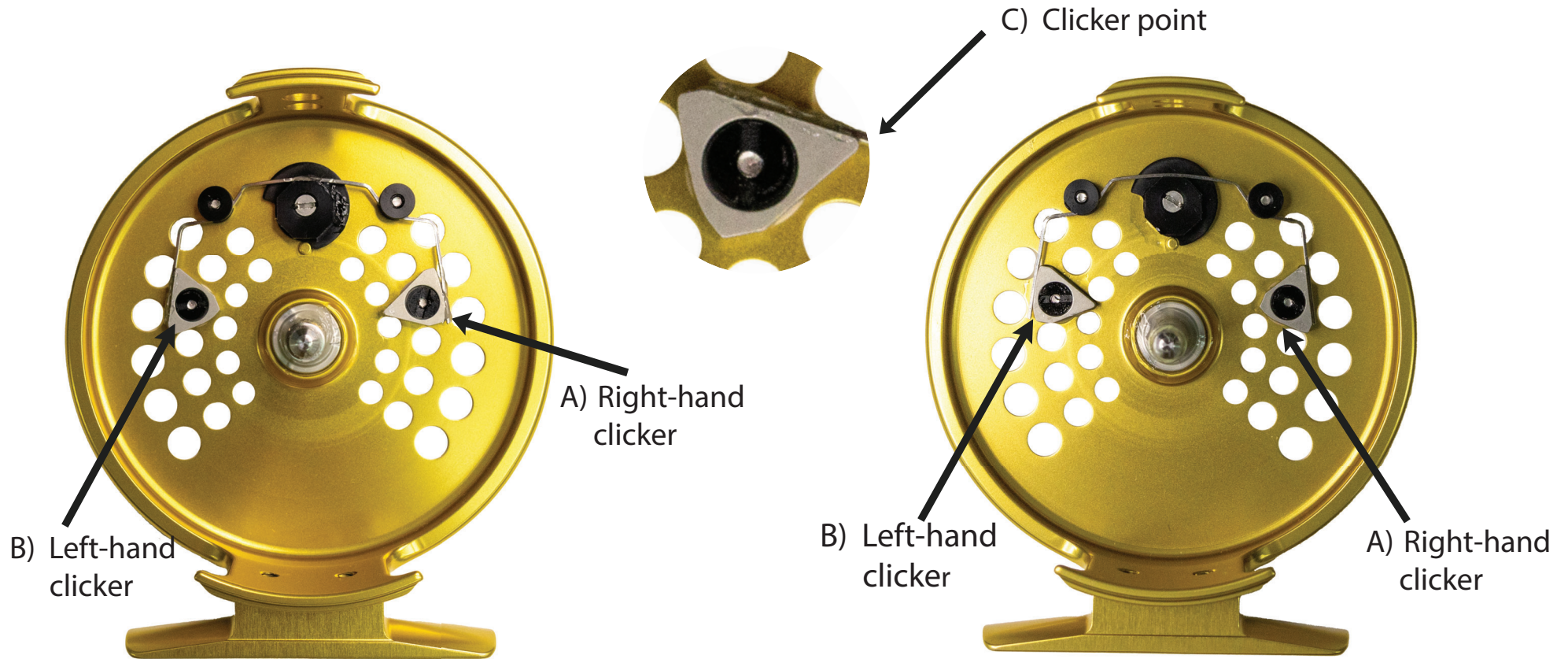
*Note: Before oiling & greasing it's important to remove any grit from the external & internal components, especially the gear & clicker - spring connection point.*

1. Apply a small amount of grease where the clickers & spring meet. Locations (B)
2. Apply a small amount of grease where the cam & the spring meet. Location (D)
3. Apply a small amount of oil around the cam & cam screw. Location (E)



4. Apply a small amount of oil around each clicker sleeve. Locations (A)
5. Apply a small amount of grease to spindle, especially the base. Location (F)
6. Before greasing, use a toothpick or toothbrush to remove all sediment and debris from the gear. Then, apply a thin layer of grease around the teeth of the gear. Location (G)

# Converting from Right to Left Hand Retrieve



## Right-hand Clicker Orientation

- 1) For Right-hand retrieve - rotate right-hand clicker (A) so that its clicker point (C) faces inward towards the spindle. Rotate the left-hand clicker (B) so that its clicker point (C) is directed away from the foot.

## Left-hand Clicker Orientation

- 2) For Left-hand retrieve - rotate left-hand clicker (B) so that its clicker point (C) faces inward towards the spindle. Rotate the right-hand clicker (A) so that its clicker point (C) is directed away from the foot.

## Specifications

Line Weight	Diameter	Width	Weight	Capacity
5-6 wt.	3.4 in.	0.804 in.	4.94 oz.	W5+100yds. backing W6+75yds. backing

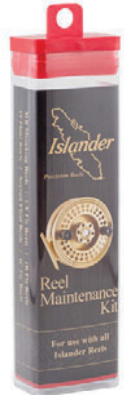
## Taking Care of Your Reel

Always change your tension adjustment to the lowest setting when storing in between outings.

Please note that this IR series reel is designed for use with only one clicker engaged at a time. Using both clickers simultaneously will lead to early wear and effect the function of the reel. After performing maintenance or changing the retrieve direction, make sure that only one clicker -either the right (A) or the left (B) -is positioned with the clicker point (C) directed toward the spindle. **(Shown in Converting from Right to Left-hand retrieve instructions and diagram)**



info@islander.com | www.islander.com



### Reel Maintenance Kit

Use the same lubricant as the pros! A well lubricated and clean reel will last you a lifetime. We recommend Islander's Reel Maintenance Kit. It comes with all the lubricants you need for your **IR-III** reel.

Oil: Super Lube® Multi-Purpose Synthetic-based Oil with PTFE®  
Grease: Super Lube® Multi-Purpose Lubricant with Teflon®

Contact your local dealer or visit [www.islander.com](http://www.islander.com).

**Copyright © 2017 Islander Precision Reels. All Rights Reserved.**

Specifications and information contained in this manual are furnished for informational use only, and are subject to change at any time without notice.

Products and corporate names appearing in this manual may or may not be registered trademarks or copyrights of their respective companies, and are used only for identification or explanation and to the owners' benefit, without the intent to infringe.