

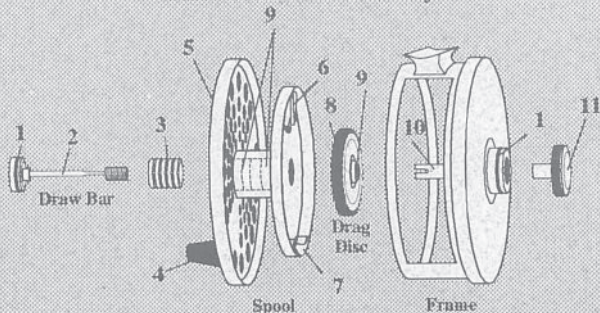


TIDEMASTERTM

Owner's Manual

Your TideMaster™ Reel will give you years of trouble-free use with minimal maintenance. Follow the steps listed in this manual to switch from one hand retrieve to another, to perform occasional lubrication, or to merely inspect the interior. We recommend you disassemble the reel over a surface that will permit easily finding any parts that are accidentally dropped.

TideMaster Reel Assembly



- 1. O-Ring
- 2. Draw Bar
- 3. Draw Bar Spring
- 4. Handle

- 5. Handle Counter Balance
(Not in view)
- 6. Outgoing Click Assembly
- 7. Outgoing Click Assembly
Counter Balance

- 8. Cork Drag Surface
(Not in view)
- 9. Bearing
- 10. Spindle
- 11. Drag Adjustment Knob

Maintenance

As with any finely made instrument, the operating life of the TideMaster™ Reel can be maximized by following a few simple maintenance procedures.

After each use in salt water, spray rinse with fresh water to remove salt. Use a light spray.

Before the fishing season, and twice, or more during the season, lubricate as indicated. For metal-to-metal lubrication, use any high quality light machine oil such as those readily available for use with guns or sewing machines. Commercially available oils incorporating Teflon® are very good as well. For the cork drag surface, neetsfoot oil is best, but any light oil will do if neetsfoot is not available.

Oil Clutch Assembly

- Don't overlubricate. Wipe away excess oil.
- Underside of pawl, the post on which it is mounted, and its surrounding area
- Gear teeth of the drag disc
- Exposed bearing surfaces at center of disc

Oil Cork Drag Surface

- Spread oil on the cork surface until it appears really "wet"

Oil Spool Assembly

- Exposed bearing surfaces
- Inside surface of draw bar/spring recess
- O-ring on draw bar
- Draw bar threads
- Underside of click pawl and the post on which it is mounted
- Click spring

Drag Knob

- Internal threads

Back of Frame

- O-ring

Handle Assembly

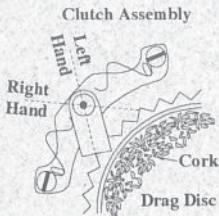
- Top and base of handle

Disassembly

- 1) Rotate the drag adjustment knob in a counterclockwise direction eight or ten turns while pressing down on it. This should loosen the draw bar sufficiently to permit the spool to be gently pulled from the frame. If it is not loose enough, turn the drag knob a few more times and try again. (The exact number of turns required to completely loosen the spool depends on the drag setting when you start.)
- 2) Pull the spool from the frame with a slight turning motion. At this point the disc drag may adhere to the spool, and may fall off.
- 3) The drag adjustment knob and draw bar are held in place by O-ring sealing retainers. To remove the drag knob, simply pull it away from the frame. To remove the draw bar, push gently on the threaded end and it will come free. Slide the draw bar spring from the draw bar shaft.
- 4) The drag disc will either be seated in its operating position at the base of the spindle through which the draw bar passes, or adhered to the spool. In either case, it may be lifted free. The reel is now disassembled.

Change From Right- or Left-Hand Retrieve

- 1) Disassemble the reel according to the above instructions.
- 2) Refer to the clutch assembly drawing. With the drag disc removed, simply move the drag pawl into its correct position to accommodate the desired direction of retrieve.
- 3) The change is complete. Reassemble.
- 4) Note that the outgoing click mechanism is located on the back face of the spool, opposite its machined counterbalance. This mechanism operates as is in either right- or left-hand retrieve, and requires no adjustment when shifting from one retrieve to the other.



Reassembly

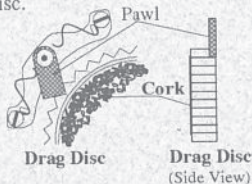
1) Slide the drag disc over the spindle, **cork side up**. Take care to seat it at the base of the spindle with the pawl engaged with the drag disc gear in the intended direction of retrieve. This operation is one of the most important in reassembly. Before proceeding, **be sure the pawl has not become disengaged from the gear and slid under the drag disc**. The reel will not operate if assembled in this manner.

2) Slide the spool onto the spindle, and with a **slight rotating motion**, seat the spool against the drag disc. All click functions should be in smooth operation when this step is completed. The most common problem at this juncture is that the drag disc is not engaged with the pawl, but riding on top of it. If this is the case, simply re-engage the pawl and proceed.

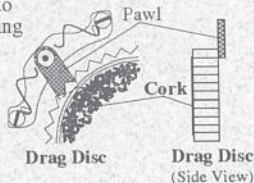
3) Slide the draw bar spring onto the draw bar (it can go either way), and insert the draw bar assembly into the spool from the handle side. Note that there are two "ears" on the draw bar near its base. These "ears" must fit into the corresponding slots you will find on the end of the spindle. Line them up, and press the draw bar assembly into position. You may check to confirm accurate seating of the "ears" into the slots by pushing in on the draw bar from the handle side. It should feel springy. If not, gently turn the draw bar assembly until the "ears" engage.

4) While holding the draw bar in position with finger pressure, insert the drag adjustment disc into its hole and rotate clockwise to attach it in position. Adjust the drag knob to the desired setting.

Correct
Pawl engaged



Incorrect
Pawl under drag disc



The Best Guarantee in Fly Fishing

Your TideMaster Reel, like all L.L. Bean products, is backed by our famous 100% guarantee. **No time limit.** If you are dissatisfied with your reel at any time—for any reason, send it back for replacement or full refund.

The L.L. Bean Guarantee

Our products are guaranteed to give 100% satisfaction in every way. Return anything purchased from us at any time if it proves otherwise. We will replace it, refund your purchase price or credit your credit card, as you wish. We do not want you to have anything from L.L. Bean that is not completely satisfactory.

Bean's Fly Fishing Phone

Want to talk to a fly fishing specialist? We have a fly fishing phone line, staffed by a small group of dedicated, knowledgeable fly fishing specialists. If you have questions about your TideMaster Reel or any other L.L. Bean fishing product, please call our Fishing Phone at 1-800-FISH-LLB (1-800-347-4552) between 8:00 a.m. and 10:00 p.m. EST, Monday through Saturday.