

# Basic Maintenance Instructions

For *Islander* Trout Series Fly Reels

*Thank you for purchasing an Islander Reel. Provided that you the maintenance points are followed, you reel will give you a lifetime of trouble-free cooperation.*



1. After each outing, the reel should be rinsed off with clean, warm water. Periodically, a more complete cleaning should be done with warm soapy water followed by the clean, warmwater rinse.
2. Periodically, check the surface of the Teflon disk (see reel blow up #21) and make sure that there is no grit between the Teflon disk and the surface of the clutch (#20).
3. Occasionally, inspect the bearings (#19) & (#23), and make sure that grit has not attached itself to the bearings. Grit will get inside the bearings and cause

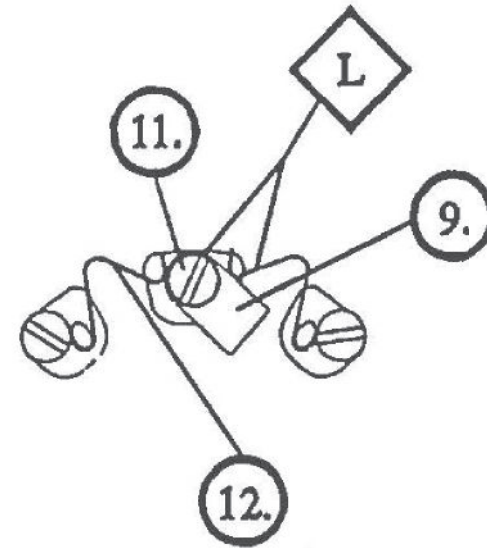
## Disassembly

1. Remove the spool (#25) from the frame (#13) by using the release latch (#31) located under the cover cap (#33) on the face of the spool.
2. Remove the set screw (#2) from under the drag adjustment knob, using the allen wrench (#6) supplied with your reel. Once this screw is removed, turn the drag-knob (#1) counter-clockwise until it comes off.
3. Remove the subspindle (#22) from the frame (#13) of the reel. The subspindle should come out along with the drawbar assembly (#24). The drawbar assembly can be removed from the subspindle.
4. Remove the clutch (#20) and the clutch bearing (#19) from the spindle (#16) of the frame (#13). The clutch and the clutch bearing. It may come out as one complete unit.

## Lubrication & Cleaning

### *Pawl Assembly*

- Wash grit away from bottom of pawl (#9), and away from pawl springs (#12).
- Using a light oil, lubricate around the pawl screw (#11), around the pawl (#9) and around the pawl springs (#12).



*Pawl Assembly*

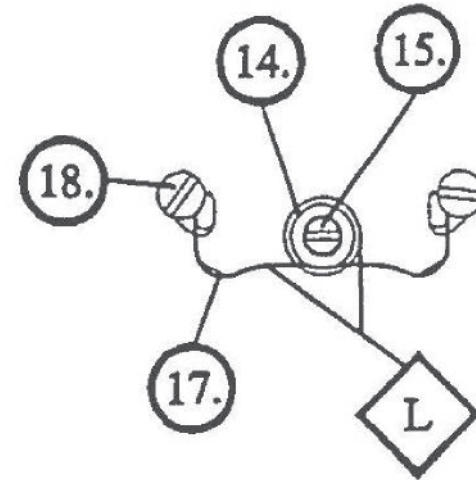
### *Clutch Assembly*

- If the clutch bearing (#19) is still attached to the clutch (#20), remove the bearing. Make sure the clutch and clutch bearing are both free of grit.
- Put a thin layer of light grease around the teeth of the clutch (#20) and around the face of the clutch bearing (#19).

## Lubrication & Cleaning

### *Clicker Assembly*

- Wash grit away from bottom of pawl (#9), and away from pawl springs (#12).
- Using a light oil, lubricate around the pawl screw (#11), around the pawl (#9) and around the pawl springs (#12).



*Clicker Assembly*

### *Subspindle and Drawbar*

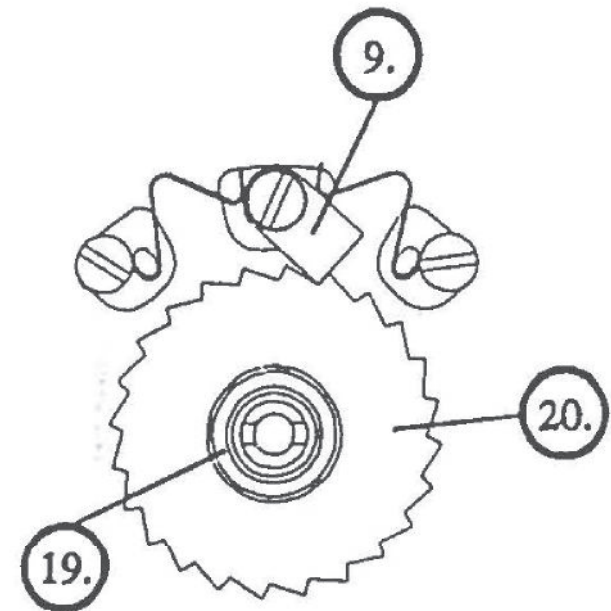
- Make sure the bushing in the subspindle (#22) is free of grit. Wipe the bottom of the Cefion drag disk (#21) and clean off the drawbar assembly (#24). Make sure the spindle (#16) is free of grit as well.
- Apply a thin layer of light grease to the teeth of the subspindle (#22). Apply a thin layer of light grease to the brass bushings on either end of the subspindle. Apply a thin layer of grease to the bearing (#23) that is part of the drawbar assembly (#24). Make sure the Teflon disk (#11) is free of oils and greases.

## *External Components*

- Keep the quick release latch clean of grit (#31), Keep the set screw holes in the back of the frame free of grit (#13).
- Apply a drop of light oil to the quick release latch (#31). Apply a thin layer of light grease on the outside of the frame O-Ring (#3) and a drop of light grease on the inside of the threaded hole on the dragknob (#1).

## *Converting From Right To Left Hand*

1. To change from left hand, remove the clutch (#20). The bearing may or may not come out with (#19).
2. Put the bearing (#19) back onto the spindle (#16), [FLANGE DOWN]. Flip the clutch (#20) and the pawl (#9) over so the teeth and the pawl are pointing in the opposite direction.



*Converting from right to left hand.*

## Reassembly

1. Place the clutch bearing (#19) onto the spindle the clutch (#20) over the clutch bearing (#19) as per your choice of left for right hand retrieve. (See bottom of previous page.)
2. Replace the subspindle (#22) onto the spindle (#16). Place the drawbar (#24) inside the subspindle, so that the drawbar sits flush with the subspindle.
3. Attach the dragknob (#1) by turning it clockwise on the threaded end of the drawbar (#24) a couple of turns. Replace the set screw (#2) back into the frame (#13) using the allen wrench supplied (#6).
4. Place the spool (#25) over the subspindle (#22) and push it down while rotating the spool until it "clicks".

## **Miscellaneous Information**

Islander recommends the use of SuperLube brand oil and grease with Teflon for all lubricating applications. SuperLube with Teflon is manufactured by Synco Chemical Corp. N.Y Teflon is a registered trademark of E.I. duPont deNemours & Co.

For warranty repair of your product, please phone, fax, or e-mail Islander Reels. If Islander recommends that you send the reel in for repair, please remove the line from your reel.

### ***Islander Reels***

**6771 Kirkpatrick Crescent**

**Saanichton B.C. V8M 1Z8 Canada**

**Phone - (250) 544 - 1440**

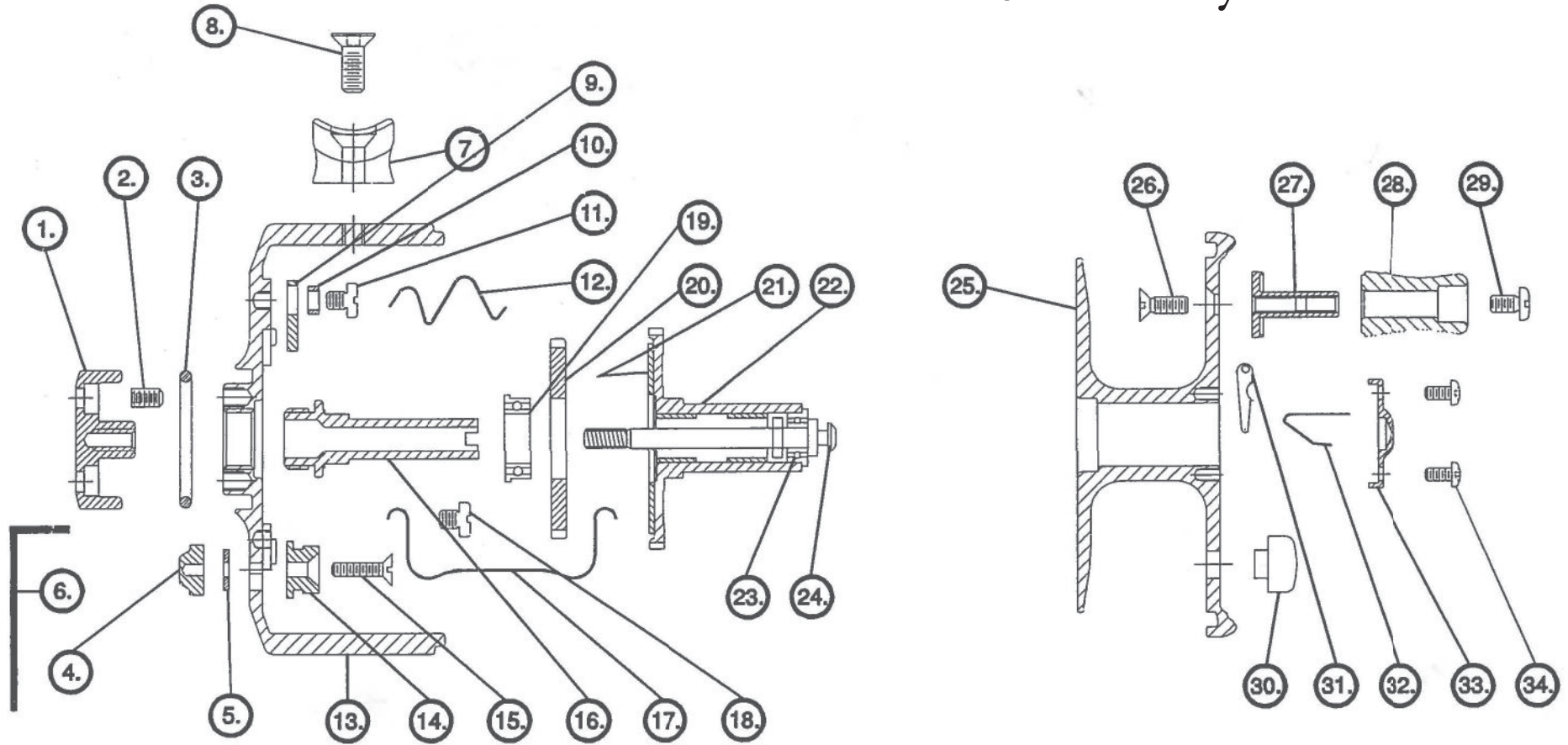
**Fax - (250) 544 - 1450**

**E-Mail - [info@islander.com](mailto:info@islander.com)**

**URL - [www.islander.com](http://www.islander.com)**



# TS1-3 Assembly and Part List



- 1. Dragknob
- 2. Set screw
- 3. O-Ring
- 4. Clicker Button
- 5. Clicker Button Washer
- 6. Allen Wrench
- 7. Foot
- 8. Foot Screw

- 9. Pawl
- 10. Pawl Sleeve
- 11. Pawl Screw
- 12. Pawl Spring
- 13. Frame
- 14. Clicker
- 15. Clicker Screw
- 16. Spindle

- 17. Clicker Spring
- 18. Clicker Spring Screw
- 19. Clutch Bearing
- 20. Clutch
- 21. Teflon Disk
- 22. Subspindle
- 23. Drawbar Bearing
- 24. Drawbar

- 25. Spool
- 26. Handle Base Screw
- 27. Handle Base
- 28. Handle
- 29. Handle Screw
- 30. Counterweight
- 31. Latch
- 32. Latch Spring
- 33. Latch Retainer
- 34. Latch Retainer Screws